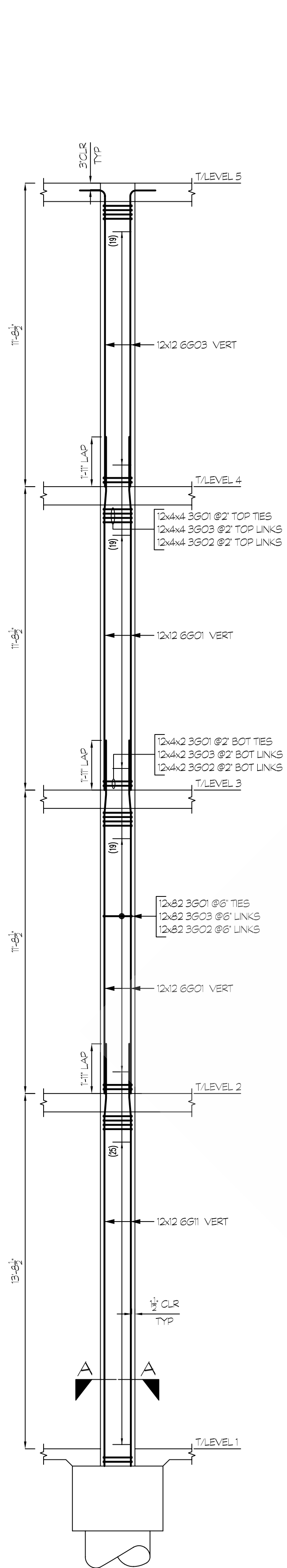


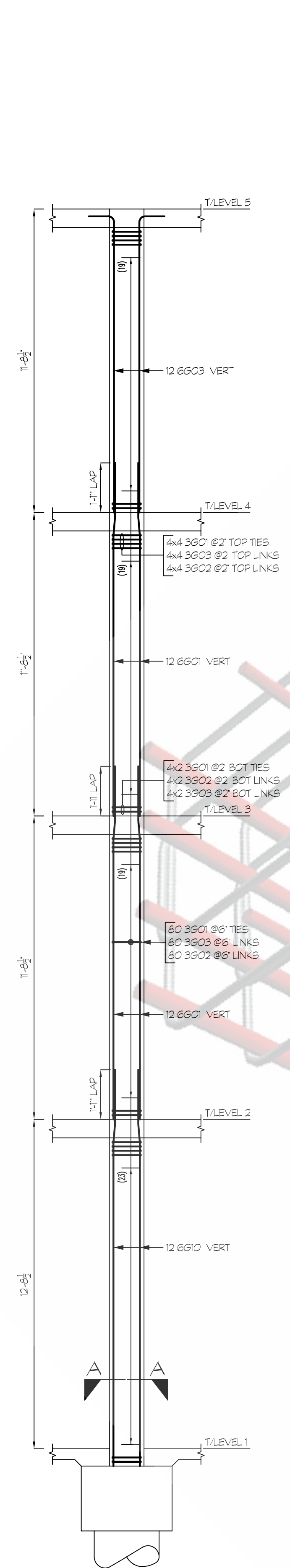
CONCRETE COLUMN REBAR LAYOUT

SCALE: 1/12"=1'-0"
SDR: 65301

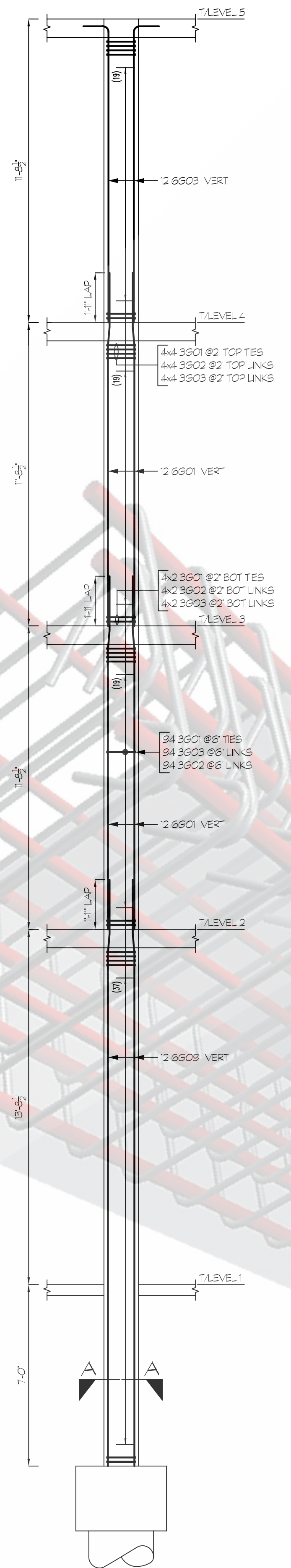
ONCE REBAR SERVICES



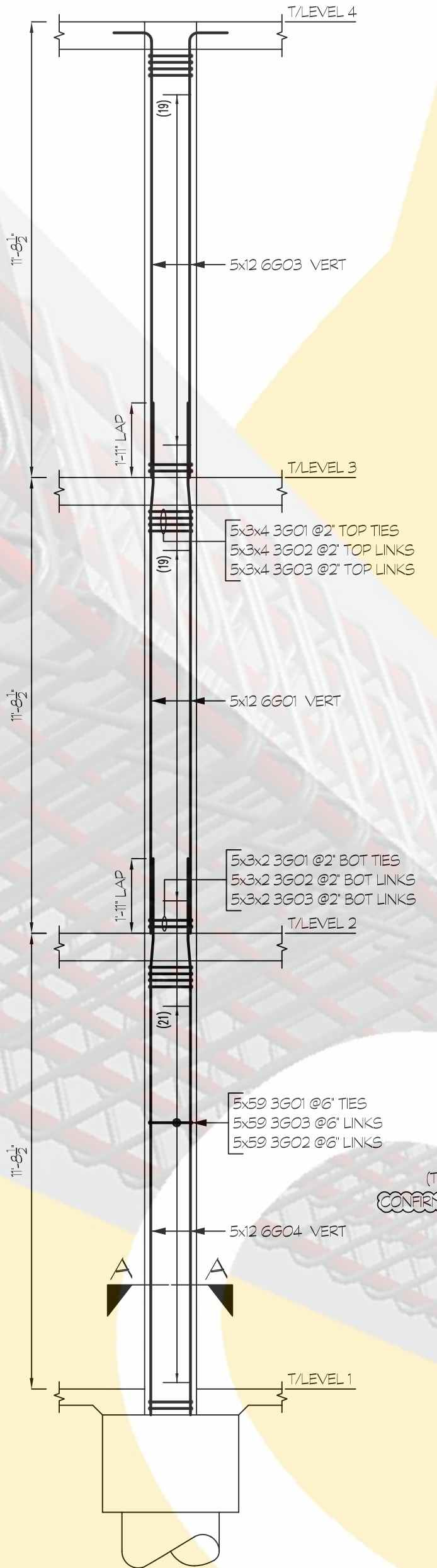
COLUMN - C1
SCALE: 1/32"=1'-0"
SDR: 65402
(2 LOC)



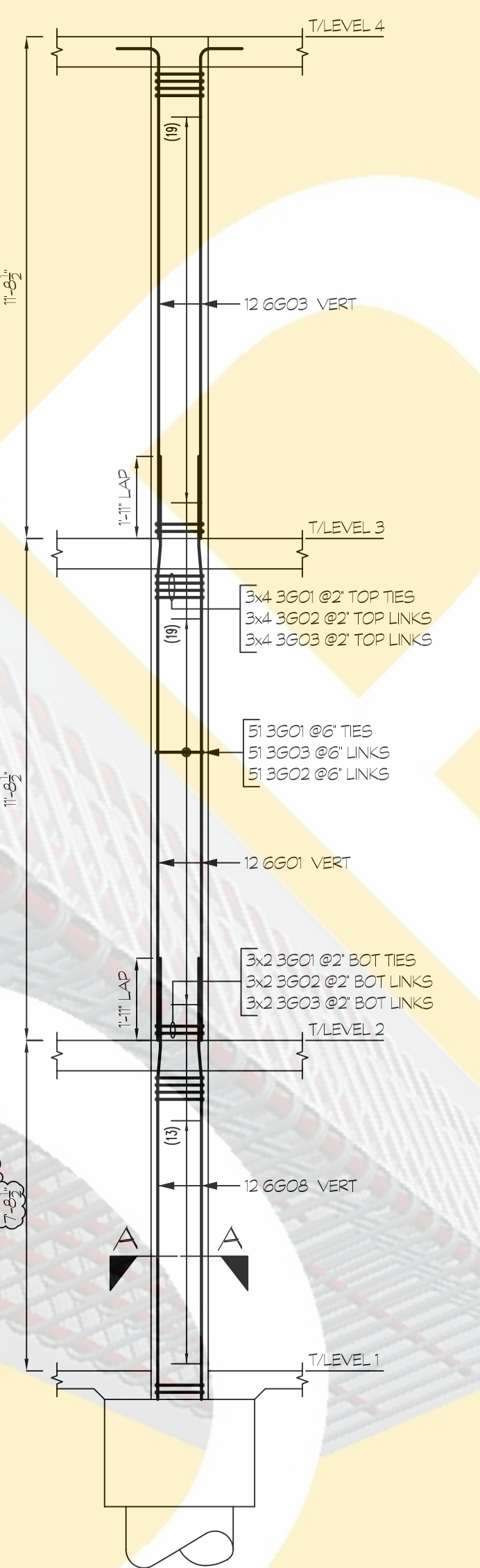
COLUMN - C1a
SCALE: 1/32"=1'-0"
SDR: 65402
(1 LOC)



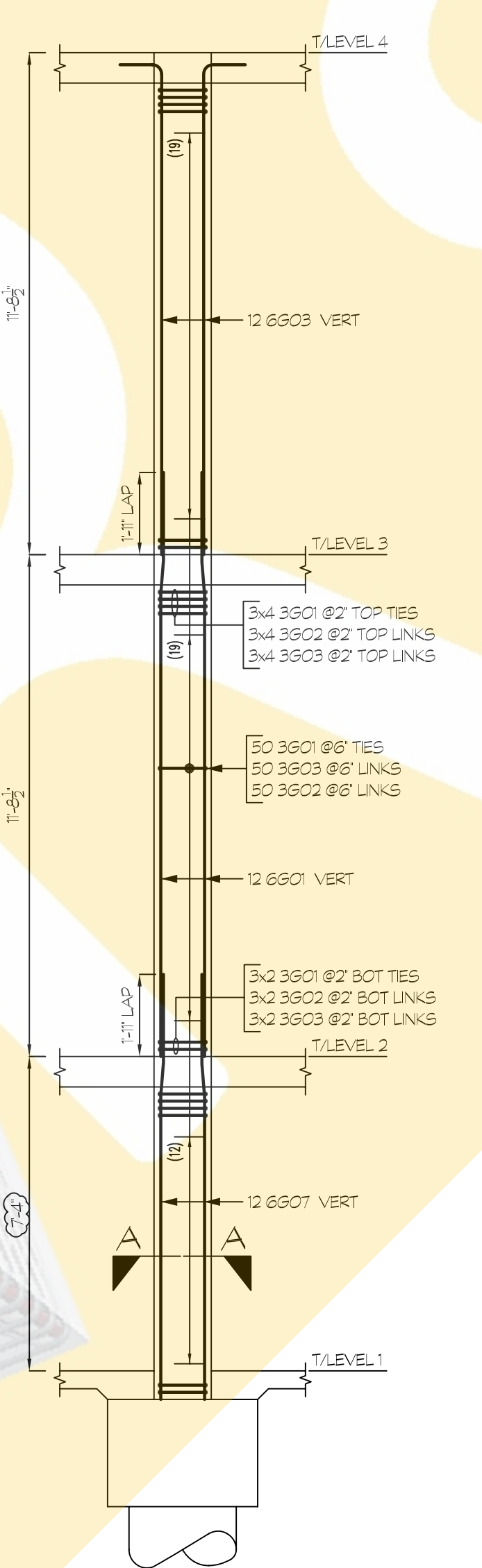
COLUMN - C1b
SCALE: 1/32"=1'-0"
SDR: 65402
(1 LOC)



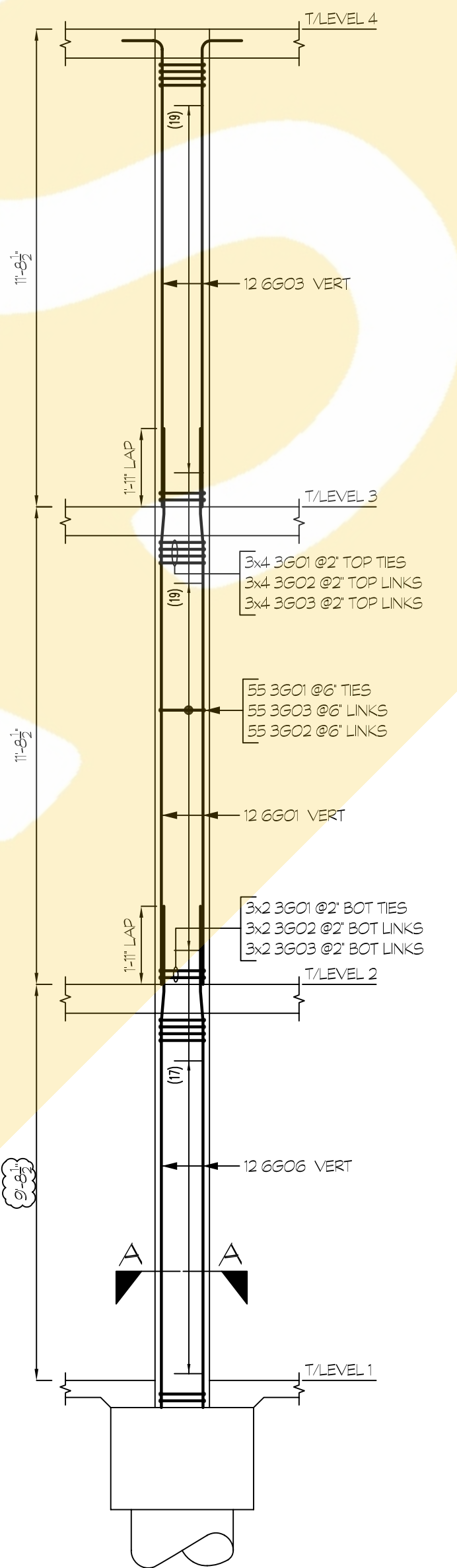
COLUMN - C1c
SCALE: 1/32"=1'-0"
SDR: 65402
(3 LOC)



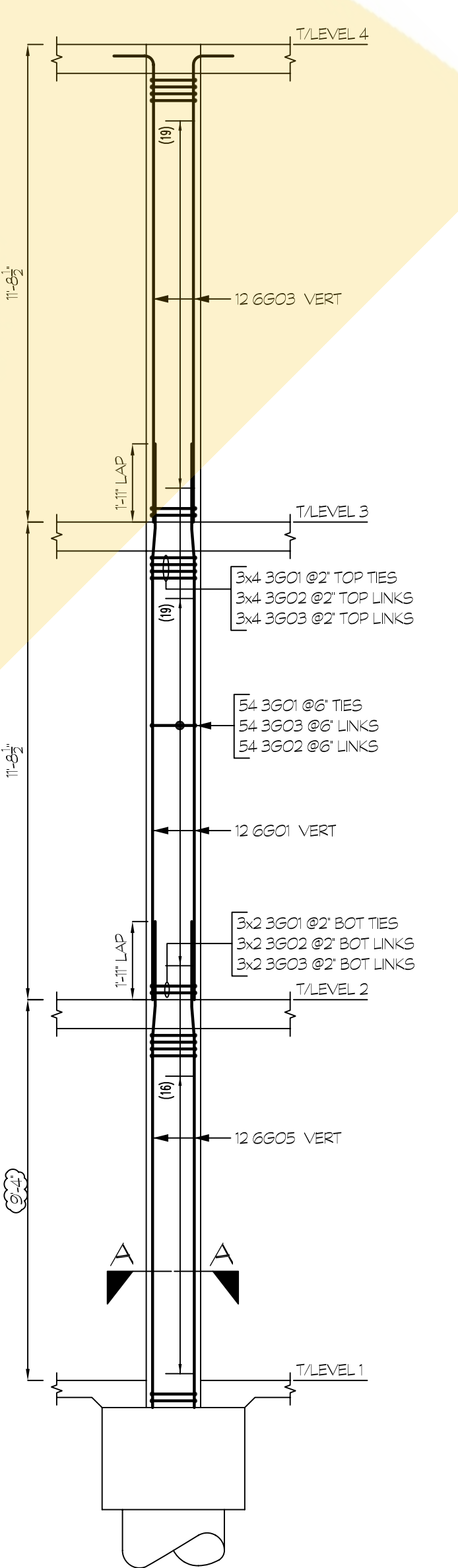
COLUMN - C1d
SCALE: 1/32"=1'-0"
SDR: 65402
(1 LOC)



COLUMN - C1e
SCALE: 1/32"=1'-0"
SDR: 65402
(1 LOC)

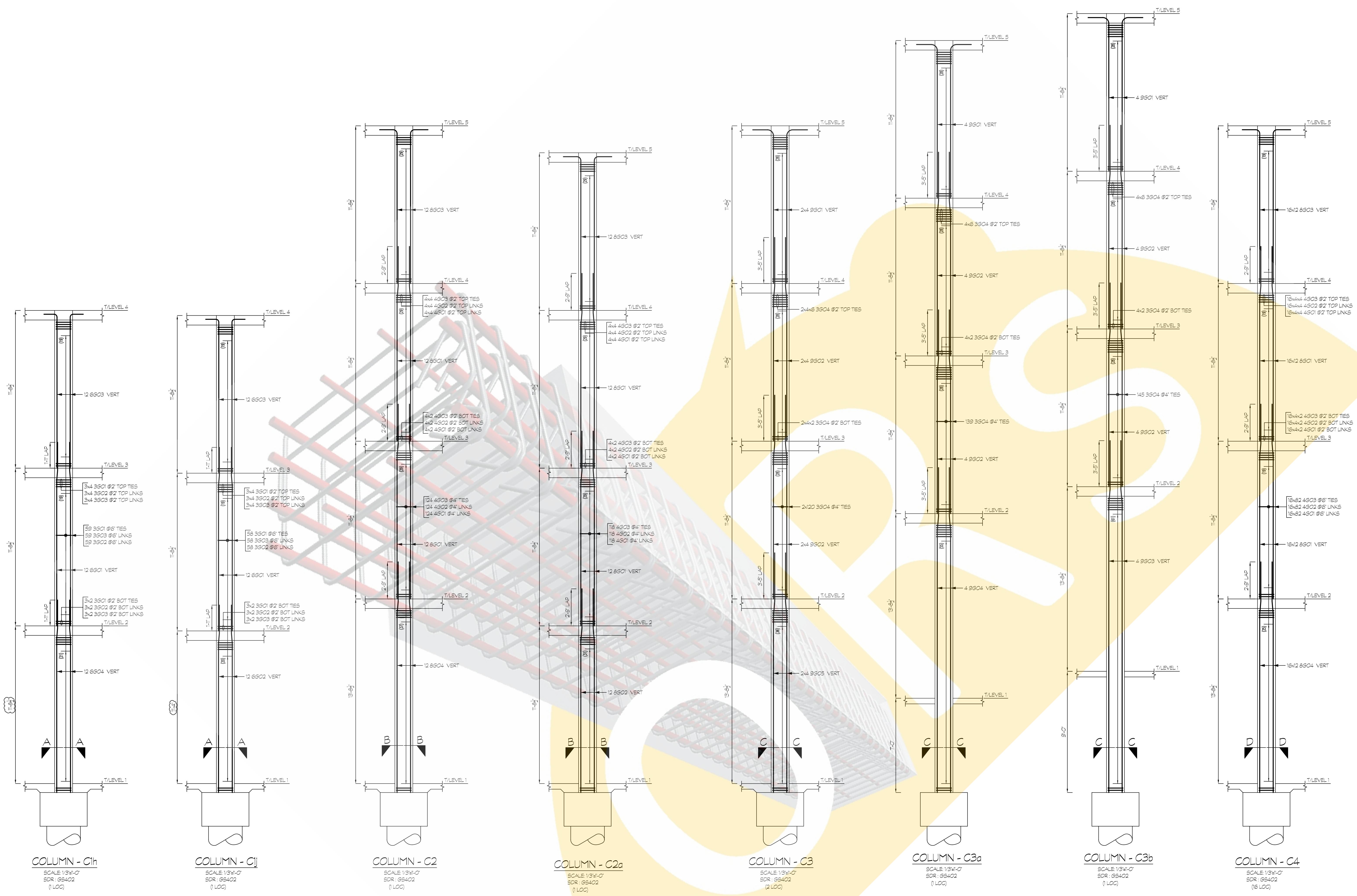


COLUMN - C1f
SCALE: 1/32"=1'-0"
SDR: 65402
(1 LOC)



COLUMN - C1g
SCALE: 1/32"=1'-0"
SDR: 65402
(1 LOC)

ONCE REBAR SERVICES



COLUMN - C1h
SCALE: 1/8"=1'-0"
SDR: 05402
(1 LOC)

COLUMN - C1j
SCALE: 1/8"=1'-0"
SDR: 05402
(1 LOC)

COLUMN - C2
SCALE: 1/8"=1'-0"
SDR: 05402
(1 LOC)

COLUMN - C2a
SCALE: 1/8"=1'-0"
SDR: 05402
(1 LOC)

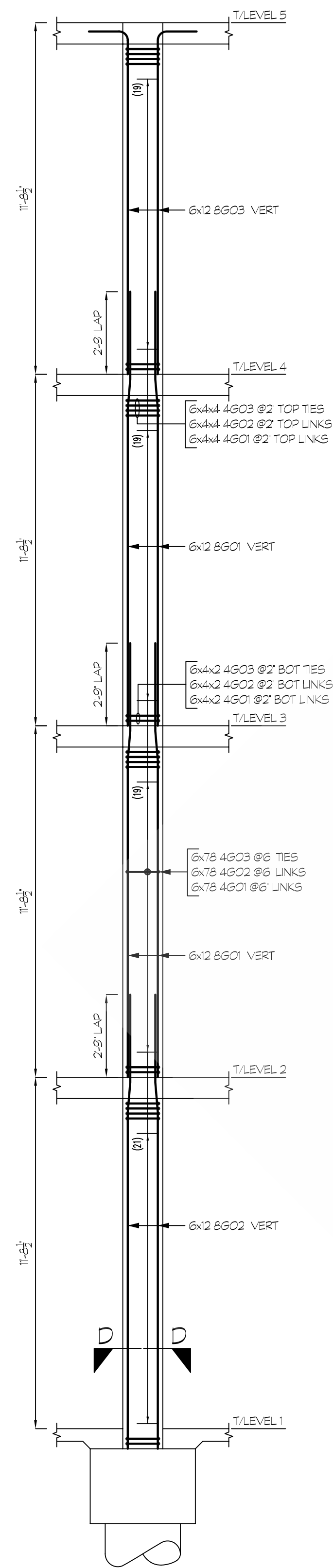
COLUMN - C3
SCALE: 1/8"=1'-0"
SDR: 05402
(2 LOC)

COLUMN - C3a
SCALE: 1/8"=1'-0"
SDR: 05402
(1 LOC)

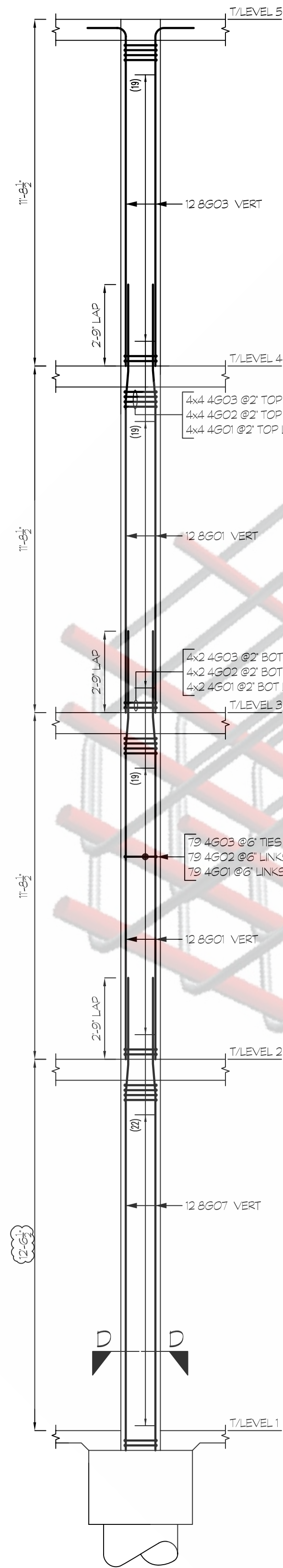
COLUMN - C3b
SCALE: 1/8"=1'-0"
SDR: 05402
(1 LOC)

COLUMN - C4
SCALE: 1/8"=1'-0"
SDR: 05402
(16 LOC)

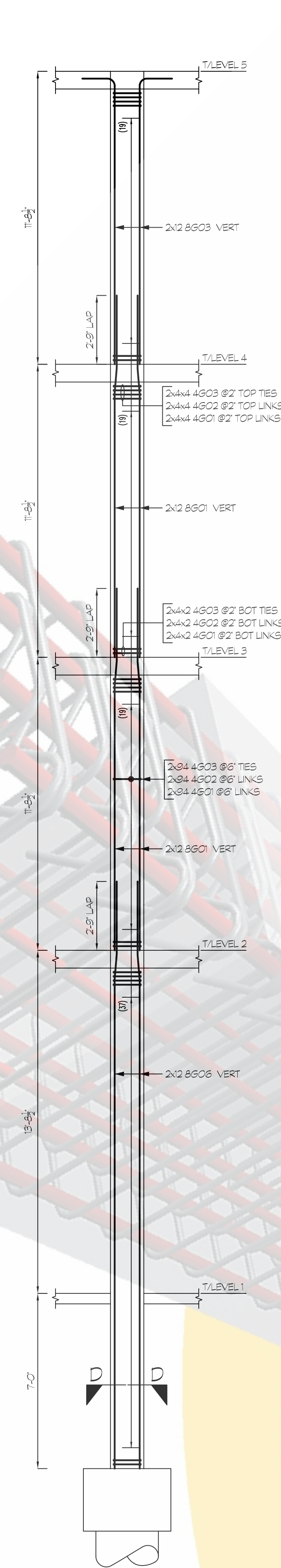
ONCE REBAR SERVICES



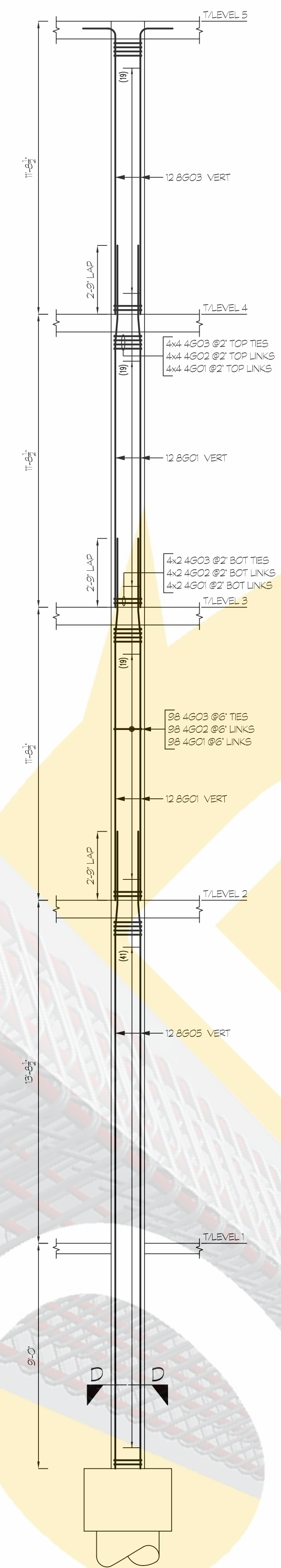
COLUMN - C4a
SCALE 1/8"=1'-0"
SDR: 65402
(6 LOC)



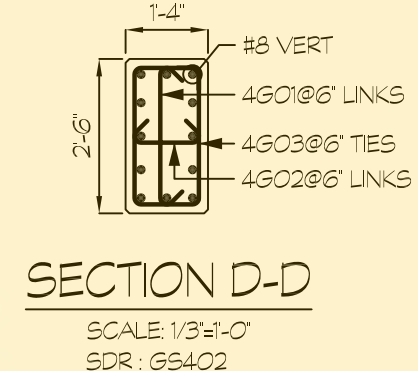
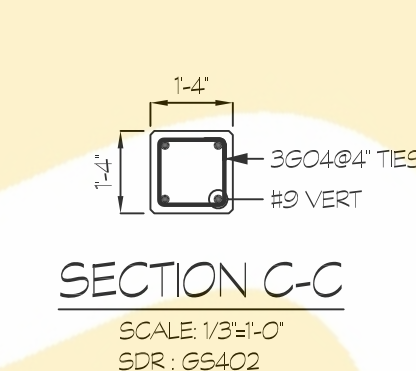
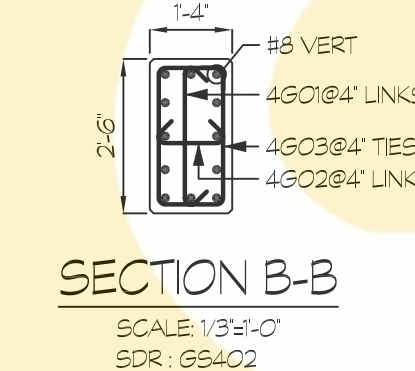
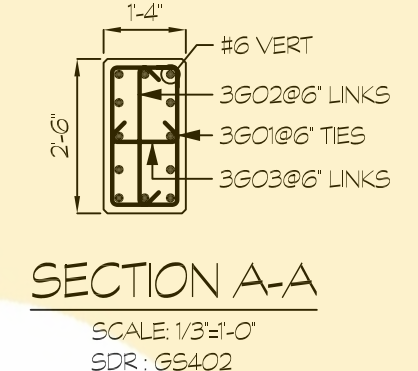
COLUMN - C4b
SCALE 1/8"=1'-0"
SDR: 65402
(1 LOC)



COLUMN - C4c
SCALE 1/8"=1'-0"
SDR: 65402
(2 LOC)

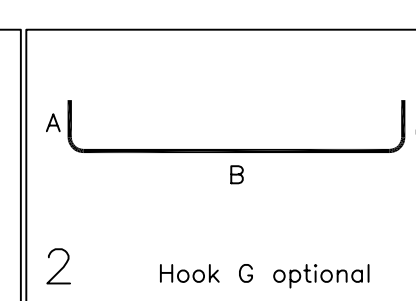
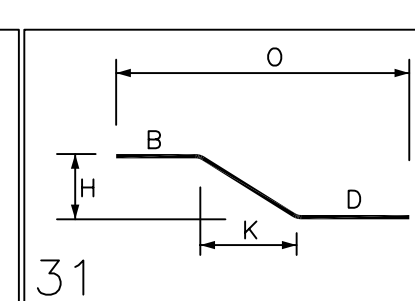
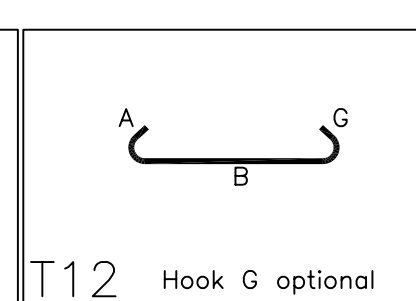
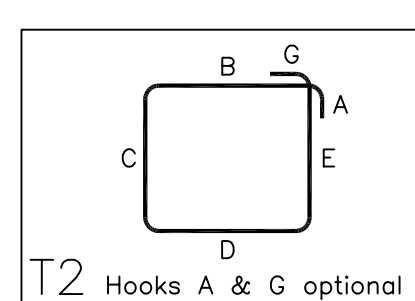


COLUMN - C4d
SCALE 1/8"=1'-0"
SDR: 65402
(1 LOC)



Release Number: R7.01-R7.04

Bar Mark	Qty	Size	Total Length	Type	BENDING DETAILS															
					'A'	'B'	'C'	'D'	'E'	'F'	'G'	'H'	'I'	'J'	'K'	'L'	'M'			
3001	2314	#3	7'-4"	T2	0'-4"	1'-1"	2'-3"	1'-1"	2'-3"											
3002	2314	#3	2'-11 1/2"	T12	0'-4 1/2"		2'-3"					0'-4 1/2"								
3003	2314	#3	1'-9 1/2"	T12	0'-4 1/2"	1'-1"						0'-4 1/2"								
3004	652	#3	5'-0"	T2	0'-4"	1'-1"	1'-1"	1'-1"	1'-1"	1'-1"										
4001	3059	#4	3'-0"	T12	0'-4 1/2"		2'-3"					0'-4 1/2"								
4002	3059	#4	1'-10"	T12	0'-4 1/2"	1'-1"						0'-4 1/2"								
4003	3059	#4	7'-5"	T2	0'-4 1/2"	1'-1"	2'-3"	1'-1"	2'-3"			0'-4 1/2"								
6001	468	#6	13'-7 1/2"	31		2'-1"	0'-9"	10'-9 1/2"						0'-1 1/2"		0'-9"	13'-7 1/2"			
6002	12	#6	13'-11"	31		2'-1"	0'-9"	11'-1"						0'-1 1/2"		0'-9"	13'-11"			
6003	300	#6	12'-5 1/2"	2	1'-0"		11'-5 1/2"													
6004	72	#6	14'-3 1/2"	31		2'-1"	0'-9"	11'-5 1/2"						0'-1 1/2"		0'-9"	14'-3 1/2"			
6005	12	#6	11'-11"	31		2'-1"	0'-9"	9'-1"						0'-1 1/2"		0'-9"	11'-11"			
6006	12	#6	12'-3 1/2"	31		2'-1"	0'-9"	9'-5 1/2"						0'-1 1/2"		0'-9"	12'-3 1/2"			
6007	12	#6	9'-11"	31		2'-1"	0'-9"	7'-1"						0'-1 1/2"		0'-9"	9'-11"			
6008	12	#6	10'-3 1/2"	31		2'-1"	0'-9"	7'-5 1/2"						0'-1 1/2"		0'-9"	10'-3 1/2"			
6009	12	#6	22'-7 1/2"	31		2'-1"	0'-9"	19'-9 1/2"						0'-1 1/2"		0'-9"	22'-7 1/2"			
6010	12	#6	15'-3 1/2"	31		2'-1"	0'-9"	12'-5 1/2"						0'-1 1/2"		0'-9"	15'-3 1/2"			
6011	144	#6	16'-3 1/2"	31		2'-1"	0'-9"	13'-5 1/2"						0'-1 1/2"		0'-9"	16'-3 1/2"			
8001	672	#8	14'-5 1/2"	31		2'-11"	1'-0"	10'-6 1/2"						0'-2"		1'-0"	14'-5 1/2"			
8002	84	#8	15'-1 1/2"	31		2'-11"	1'-0"	11'-2 1/2"						0'-2"		1'-0"	15'-1 1/2"			
8003	336	#8	12'-9 1/2"	2	1'-4"		11'-5 1/2"													
8004	204	#8	17'-1 1/2"	31		2'-11"	1'-0"	13'-2 1/2"						0'-2"		1'-0"	17'-1 1/2"			
8005	12	#8	25'-5 1/2"	31		2'-11"	1'-0"	21'-6 1/2"						0'-2"		1'-0"	25'-5 1/2"			
8006	24	#8	23'-5 1/2"	31		2'-11"	1'-0"	19'-6 1/2"						0'-2"		1'-0"	23'-5 1/2"			
8007	12	#8	15'-11 1/2"	31		2'-11"	1'-0"	12'-0 1/2"						0'-2"		1'-0"	15'-11 1/2"			
9001	16	#9	13'-0 1/2"	2	1'-7"		11'-5 1/2"													
9002	32	#9	15'-1 1/2"	31		3'-7"	1'-1 1/2"	10'-4 1/2"						0'-2 1/2"		1'-1 1/2"	15'-1 1/2"			
9003	4	#9	26'-1 1/2"	31		3'-7"	1'-1 1/2"	21'-4 1/2"						0'-2 1/2"		1'-1 1/2"	26'-1 1/2"			
9004	4	#9	24'-1 1/2"	31		3'-7"	1'-1 1/2"	19'-4 1/2"						0'-2 1/2"		1'-1 1/2"	24'-1 1/2"			
9005	8	#9	17'-9 1/2"	31		3'-7"	1'-1 1/2"	13'-0 1/2"						0'-2 1/2"		1'-1 1/2"	17'-9 1/2"			



ONCE REBAR SERVICES